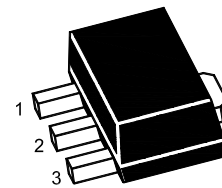


ST 2SC2884U

NPN Silicon Epitaxial Planar Transistor

for audio frequency amplifier applications



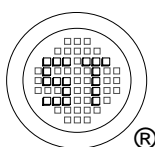
1.Base 2.Collector 3.Emitter
SOT-89 Plastic Package

Absolute Maximum Ratings ($T_a = 25\text{ }^\circ\text{C}$)

| Parameter | Symbol | Value | Unit |
|-----------------------------|-----------|---------------|------------------|
| Collector Base Voltage | V_{CBO} | 35 | V |
| Collector Emitter Voltage | V_{CEO} | 30 | V |
| Emitter Base Voltage | V_{EBO} | 5 | V |
| Collector Current | I_C | 800 | mA |
| Collector Power Dissipation | P_C | 500 | mW |
| Junction Temperature | T_J | 150 | $^\circ\text{C}$ |
| Storage Temperature Range | T_{Stg} | - 55 to + 150 | $^\circ\text{C}$ |

Characteristics at $T_a = 25\text{ }^\circ\text{C}$

| Parameter | Symbol | Min. | Typ. | Max. | Unit | |
|---|----------------------|----------|------|------|---------------|---|
| DC Current Gain at $V_{CE} = 1\text{ V}$, $I_C = 100\text{ mA}$ at $V_{CE} = 1\text{ V}$, $I_C = 700\text{ mA}$ | Current Gain Group O | h_{FE} | 100 | - | 200 | - |
| | Current Gain Group Y | h_{FE} | 160 | - | 320 | - |
| | h_{FE} | 35 | - | - | - | |
| Collector Base Cutoff Current at $V_{CB} = 35\text{ V}$ | I_{CBO} | - | - | 0.1 | μA | |
| Emitter Base Cutoff Current at $V_{EB} = 5\text{ V}$ | I_{EBO} | - | - | 0.1 | μA | |
| Collector Base Breakdown Voltage at $I_C = 100\text{ }\mu\text{A}$ | $V_{(BR)CBO}$ | 35 | - | - | V | |
| Collector Emitter Breakdown Voltage at $I_C = 10\text{ mA}$ | $V_{(BR)CEO}$ | 30 | - | - | V | |
| Emitter Base Breakdown Voltage at $I_E = 100\text{ }\mu\text{A}$ | $V_{(BR)EBO}$ | 5 | - | - | V | |
| Collector Emitter Saturation Voltage at $I_C = 500\text{ mA}$, $I_B = 20\text{ mA}$ | $V_{CE(sat)}$ | - | - | 0.5 | V | |
| Base Emitter On Voltage at $V_{CE} = 1\text{ V}$, $I_C = 10\text{ mA}$ | $V_{BE(on)}$ | 0.5 | - | 0.8 | V | |
| Transition Frequency at $V_{CE} = 5\text{ V}$, $I_C = 10\text{ mA}$ | f_T | - | 120 | - | MHz | |
| Output Capacitance at $V_{CB} = 10\text{ V}$, $f = 1\text{ MHz}$ | C_{ob} | - | 13 | - | pF | |

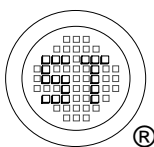
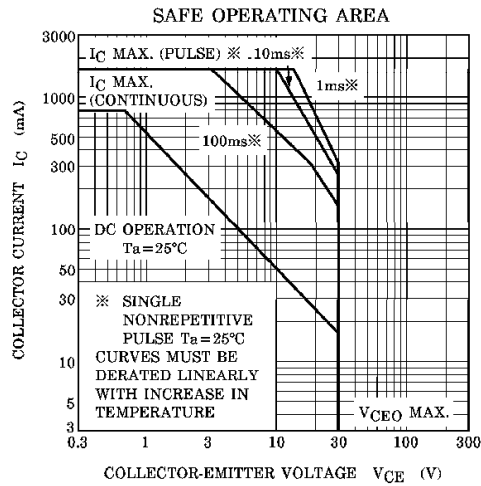
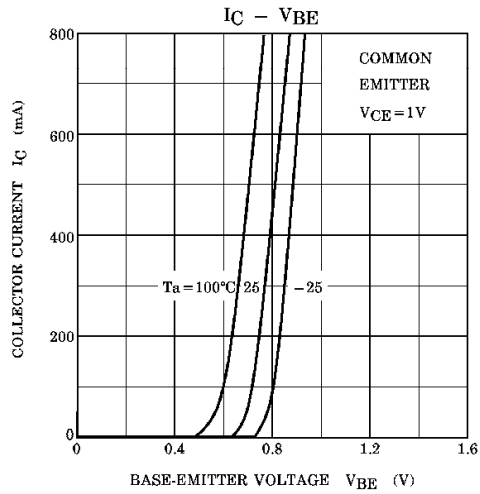
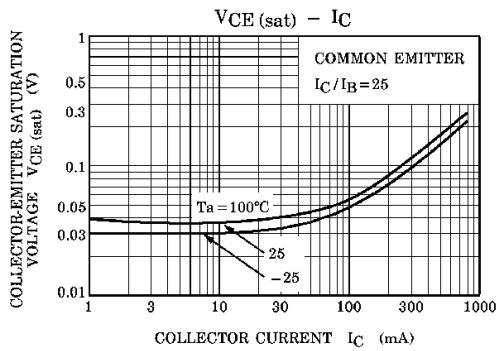
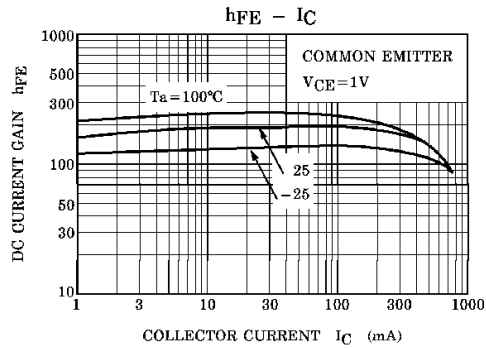
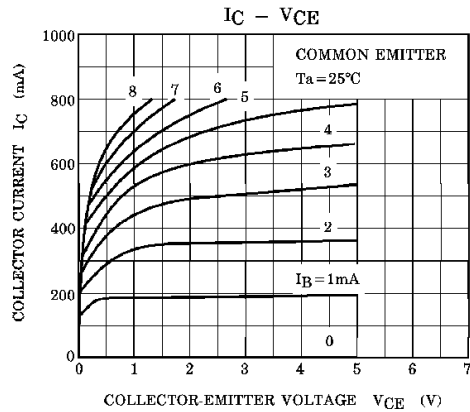


SEMTECH ELECTRONICS LTD.
Subsidiary of Sino-Tech International (BVI) Limited



Dated : 03/01/2008

ST 2SC2884U

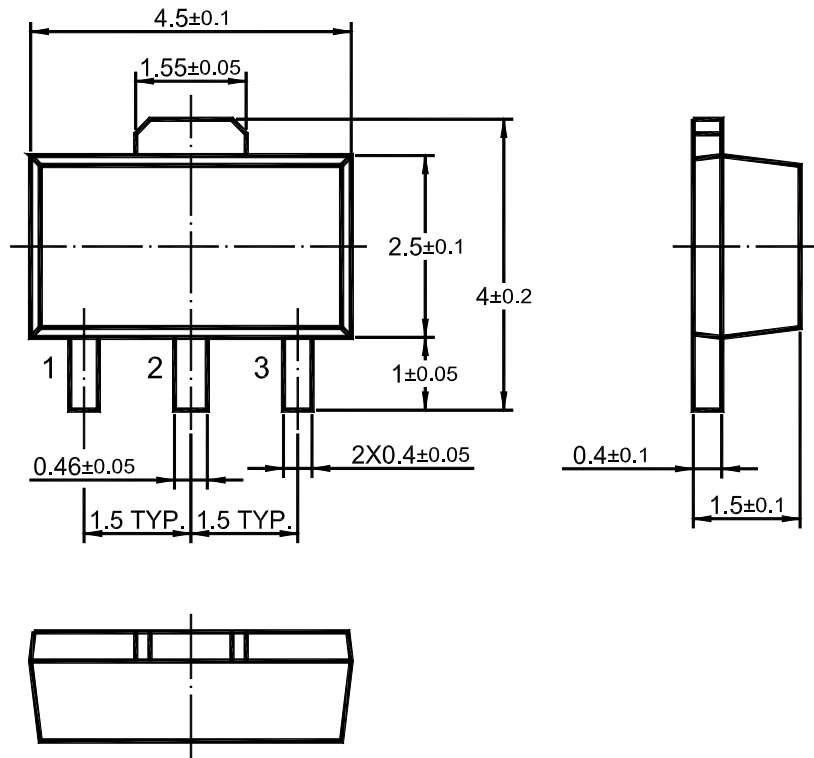


SEMTECH ELECTRONICS LTD.
Subsidiary of Sino-Tech International (BVI) Limited

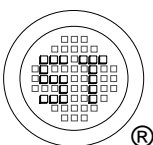


ST 2SC2884U

SOT-89 PACKAGE OUTLINE



Dimensions in mm



SEMTECH ELECTRONICS LTD.
Subsidiary of Sino-Tech International (BVI) Limited



Dated : 03/01/2008