

ZMC...UDZB Series

Silicon Epitaxial Planar Zener Diodes

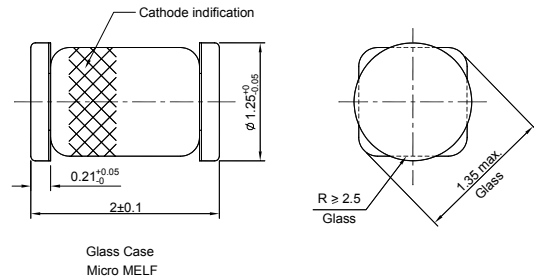
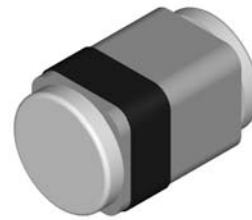
Features

- Fits onto SOD-323 / SOT-23 footprints
- MicroMELF package

Applications

- Constant voltage control

LS-31



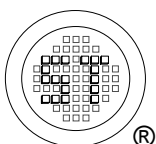
Glass Case
Micro MELF

Absolute Maximum Ratings ($T_a = 25\text{ }^\circ\text{C}$)

Parameter	Symbol	Value	Unit
Power Dissipation	P_{tot}	500	mW
Junction Temperature	T_j	150	$^\circ\text{C}$
Storage Temperature Range	T_{stg}	- 55 to + 150	$^\circ\text{C}$
Operating Temperature Range	T_{opr}	- 55 to + 150	$^\circ\text{C}$

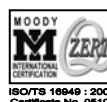
Characteristics at $T_a = 25\text{ }^\circ\text{C}$

Parameter	Symbol	Max.	Unit
Forward Voltage at $I_F = 100\text{ mA}$	V_F	1	V



SEMTECH ELECTRONICS LTD.

(Subsidiary of Sino-Tech International Holdings Limited, a company listed on the Hong Kong Stock Exchange, Stock Code: 724)



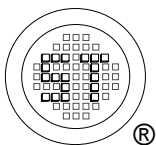
Dated : 18/07/2009

ZMC...UDZB Series

Characteristics at $T_a = 25\text{ }^\circ\text{C}$

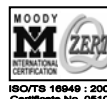
Type	Zener Voltage ¹⁾			Operating Resistance		Rising Operating Resistance		Reverse Current	
	V_Z		at I_{ZT}	Z_{ZT}	at I_{ZT}	Z_{ZK}	at I_{ZK}	I_R	at V_R
	Min. (V)	Max. (V)	(mA)	Max. (Ω)	(mA)	Max. (Ω)	(mA)	Max. (μA)	(V)
ZMC3V6UDZB	3.6	3.845	5	100	5	1000	1	10	1
ZMC3V9UDZB	3.89	4.16	5	100	5	1000	1	5	1
ZMC4V3UDZB	4.17	4.43	5	100	5	1000	1	5	1
ZMC4V7UDZB	4.55	4.75	5	100	5	800	0.5	2	1
ZMC5V1UDZB	4.98	5.2	5	80	5	500	0.5	2	1.5
ZMC5V6UDZB	5.49	5.73	5	60	5	200	0.5	1	2.5
ZMC6V2UDZB	6.06	6.33	5	60	5	100	0.5	1	3
ZMC6V8UDZB	6.65	6.93	5	40	5	60	0.5	0.5	3.5
ZMC7V5UDZB	7.28	7.6	5	30	5	60	0.5	0.5	4
ZMC8V2UDZB	8.02	8.36	5	30	5	60	0.5	0.5	5
ZMC9V1UDZB	8.85	9.23	5	30	5	60	0.5	0.5	6
ZMC10UDZB	9.77	10.21	5	30	5	60	0.5	0.1	7
ZMC11UDZB	10.76	11.22	5	30	5	60	0.5	0.1	8
ZMC12UDZB	11.74	12.24	5	30	5	80	0.5	0.1	9
ZMC13UDZB	12.91	13.49	5	37	5	80	0.5	0.1	10
ZMC15UDZB	14.34	14.98	5	42	5	80	0.5	0.1	11
ZMC16UDZB	15.85	16.51	5	50	5	80	0.5	0.1	12
ZMC18UDZB	17.56	18.35	5	65	5	80	0.5	0.1	13
ZMC20UDZB	19.52	20.39	5	85	5	100	0.5	0.1	15
ZMC22UDZB	21.54	22.47	5	100	5	100	0.5	0.1	17
ZMC24UDZB	23.72	24.78	5	120	5	120	0.5	0.1	19
ZMC27UDZB	26.19	27.53	5	150	5	150	0.5	0.1	21
ZMC30UDZB	29.19	30.69	5	200	5	200	0.5	0.1	23
ZMC33UDZB	32.15	33.79	5	250	5	250	0.5	0.1	25
ZMC36UDZB	35.07	36.87	5	300	5	300	0.5	0.1	27

¹⁾ Tested with pulses $t_p = 20\text{ ms}$.



SEMTECH ELECTRONICS LTD.

(Subsidiary of Sino-Tech International Holdings Limited, a company listed on the Hong Kong Stock Exchange, Stock Code: 724)



Dated : 18/07/2009