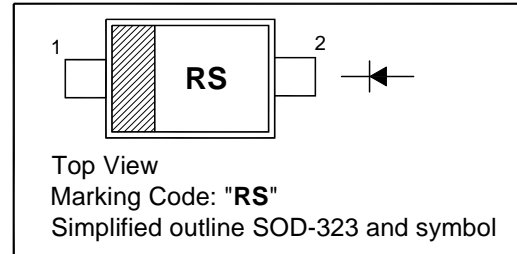


# 1SF0280WS

## Surface Mount Super Fast Diode

### PINNING

PIN	DESCRIPTION
1	Cathode
2	Anode

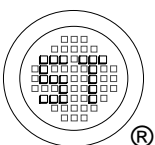


### Absolute Maximum Ratings ( $T_a = 25\text{ }^\circ\text{C}$ )

Parameter	Symbol	Value	Unit
Peak Reverse Voltage	$V_{RM}$	800	V
Average Rectified Forward Current	$I_{F(AV)}$	200	mA
Operating and Storage Temperature Range	$T_j, T_{stg}$	- 40 to + 150	$^\circ\text{C}$

### Electrical Characteristics ( $T_a = 25\text{ }^\circ\text{C}$ )

Parameter	Symbol	Max.	Unit
Forward Voltage at $I_F = 200\text{ mA}$	$V_F$	4	V
Reverse Current at $V_R = 800\text{ V}$	$I_R$	10	$\mu\text{A}$
Capacitance between Terminals at $V_R = 0\text{ V}$ , $f = 1\text{ MHz}$	$C_T$	5	pF
Reverse Recovery Time at $I_F = I_R = 100\text{ mA}$ , $t_{rr} = 0.1 \times I_R$	$t_{rr}$	40	ns



**SEMTECH ELECTRONICS LTD.**  
 Subsidiary of Sino-Tech International (BVI) Limited



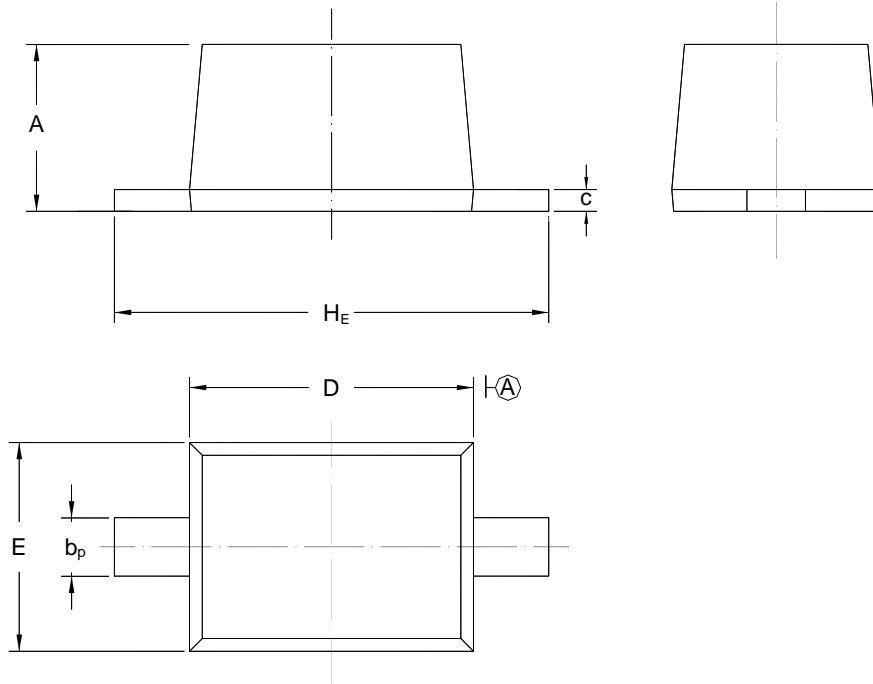
Dated: 10/04/2012 Rev: 02

# 1SF0280WS

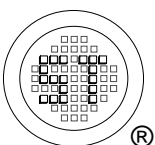
## PACKAGE OUTLINE

Plastic surface mounted package; 2 leads

SOD-323



UNIT	A	b <sub>p</sub>	C	D	E	H <sub>E</sub>
mm	1.10 0.80	0.40 0.25	0.15 0.10	1.80 1.60	1.35 1.15	2.80 2.30



**SEMTECH ELECTRONICS LTD.**  
Subsidiary of Sino-Tech International (BVI) Limited



Dated: 10/04/2012 Rev: 02