

SDB160WS

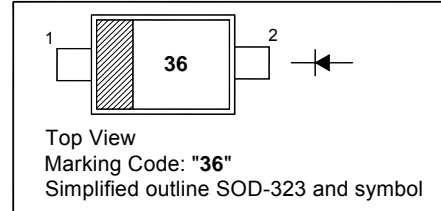
Surface Mount Schottky Barrier Rectifier

Features

- High surge capability

PINNING

PIN	DESCRIPTION
1	Cathode
2	Anode

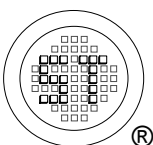


Absolute Maximum Ratings ($T_a = 25\text{ }^\circ\text{C}$)

Parameter	Symbol	Value	Unit
Peak Repetitive Reverse Voltage	V_{RRM}	60	V
Working Peak Reverse Voltage	V_{RWM}	60	V
DC Blocking Voltage	V_R	60	V
Average Forward Current	$I_{F(AV)}$	1	A
Peak Forward Surge Current (8.3 ms)	I_{FSM}	22	A
Junction Temperature	T_j	- 65 to +150	$^\circ\text{C}$
Storage Temperature Range	T_{stg}	- 65 to +150	$^\circ\text{C}$

Characteristics at $T_a = 25\text{ }^\circ\text{C}$

Parameter	Symbol	Min.	Typ.	Max.	Unit
Reverse Breakdown Voltage at $I_R = 100\text{ }\mu\text{A}$	$V_{(BR)R}$	60	-	-	V
Forward Voltage at $I_F = 0.1\text{ A}$ at $I_F = 0.7\text{ A}$ at $I_F = 1\text{ A}$	V_F	-	-	0.45 0.58 0.64	V
Reverse Current at $V_R = 5\text{ V}$ at $V_R = 60\text{ V}$	I_R	-	-	5 100	μA
Total Capacitance at $V_R = 10\text{ V}$, $f = 1\text{ MHz}$	C_T	-	38	-	pF

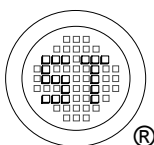
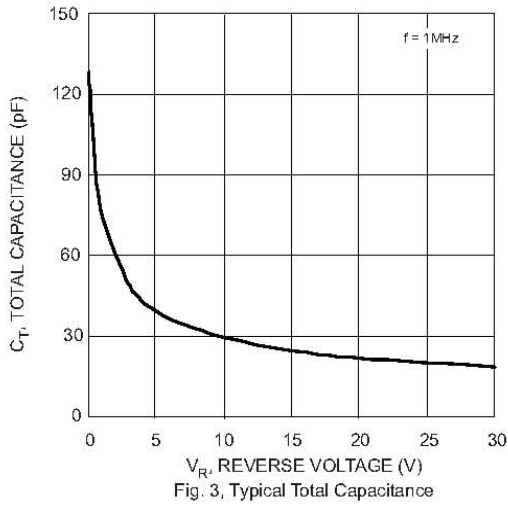
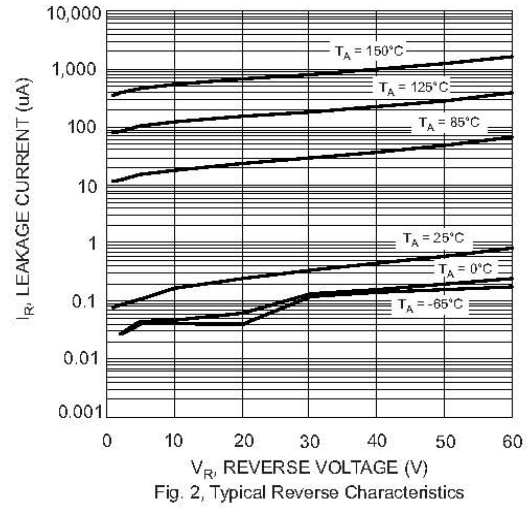
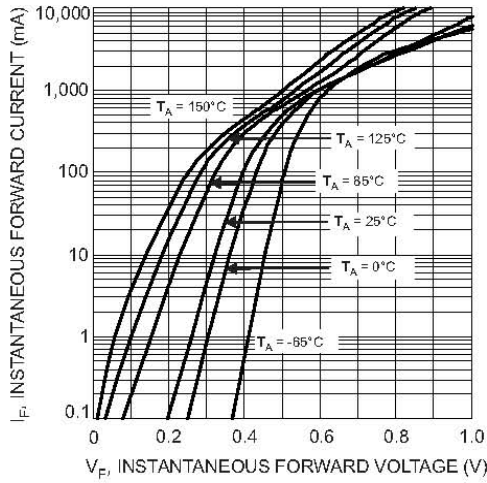


SEMTECH ELECTRONICS LTD.
Subsidiary of Sino-Tech International (BVI) Limited



Dated: 05/12/2011 Rev: 01

SDB160WS



SEMTECH ELECTRONICS LTD.
 Subsidiary of Sino-Tech International (BVI) Limited

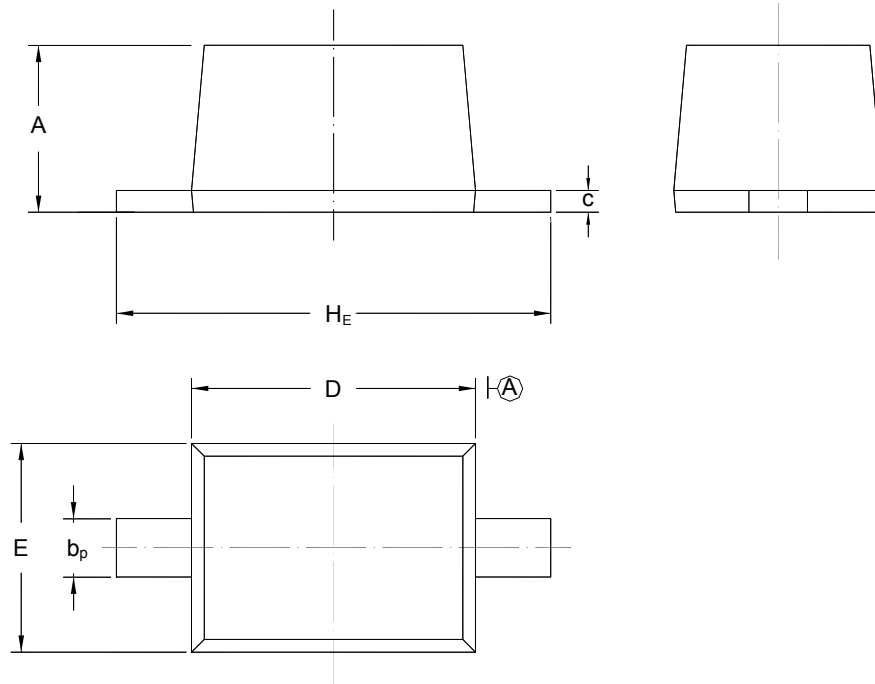


SDB160WS

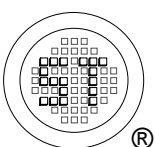
PACKAGE OUTLINE

Plastic surface mounted package; 2 leads

SOD-323



UNIT	A	b _p	C	D	E	H _E
mm	1.10 0.80	0.40 0.25	0.15 0.10	1.80 1.60	1.35 1.15	2.80 2.30



SEMTECH ELECTRONICS LTD.
Subsidiary of Sino-Tech International (BVI) Limited



Dated: 05/12/2011 Rev: 01