

1SS510WT

SILICON EPITAXIAL PLANAR DIODE

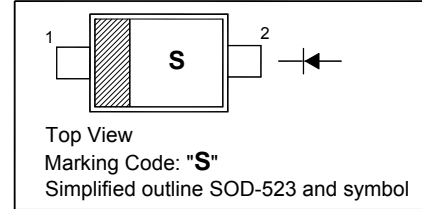
Band Switching Diode

Applications

- For VHF tuner band RF attenuator
- AGC for FM tuner

PINNING

| PIN | DESCRIPTION |
|-----|-------------|
| 1 | Cathode |
| 2 | Anode |

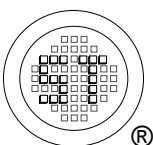


Absolute Maximum Ratings ($T_a = 25\text{ }^\circ\text{C}$)

| Parameter | Symbol | Value | Unit |
|---------------------------|-----------|---------------|------------------|
| Reverse Voltage | V_R | 50 | V |
| Forward Current | I_F | 50 | mA |
| Junction Temperature | T_j | 150 | $^\circ\text{C}$ |
| Storage Temperature Range | T_{stg} | - 55 to + 150 | $^\circ\text{C}$ |

Characteristics at $T_a = 25\text{ }^\circ\text{C}$

| Parameter | Symbol | Min. | Typ. | Max. | Unit |
|--|--------|------|------|------|---------------|
| Reverse Voltage at $I_R = 10\text{ }\mu\text{A}$ | V_R | 50 | - | - | V |
| Reverse Current at $V_R = 50\text{ V}$ | I_R | - | - | 0.1 | μA |
| Total Capacitance at $V_R = 50\text{ V}$, $f = 1\text{ MHz}$ | C_T | - | 0.25 | - | pF |
| Series Resistance at $I_F = 5\text{ mA}$, $f = 100\text{ MHz}$ | r_s | - | 1.5 | - | Ω |



SEMTECH ELECTRONICS LTD.
Subsidiary of Sino-Tech International (BVI) Limited



Dated : 23/11/2006

Fig. 1 $I_C - T_a$

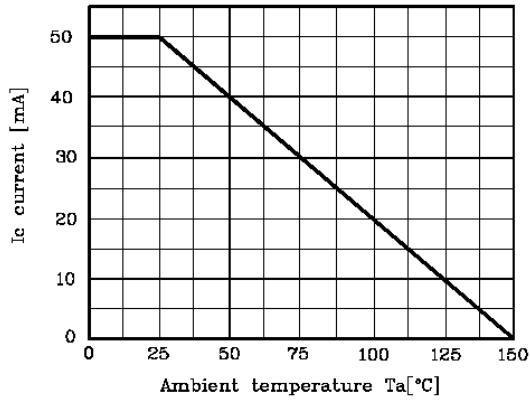


Fig. 2 $I_F - V_F$

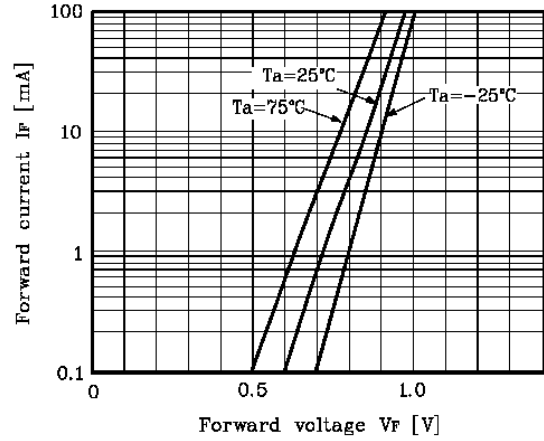


Fig. 3 $C_T - V_R$

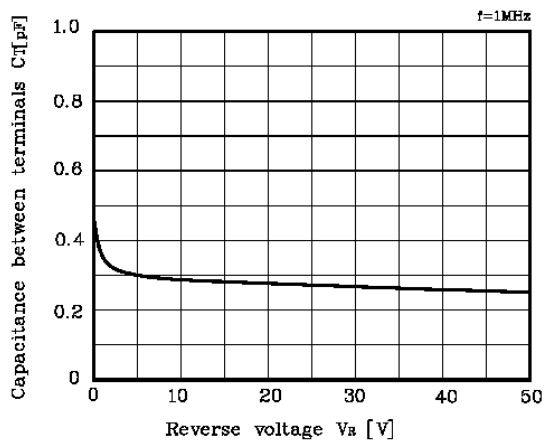
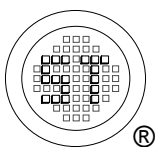
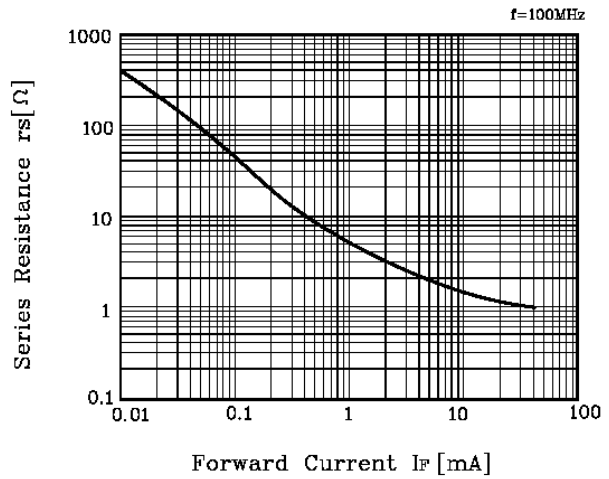


Fig. 4 $r_s - I_F$

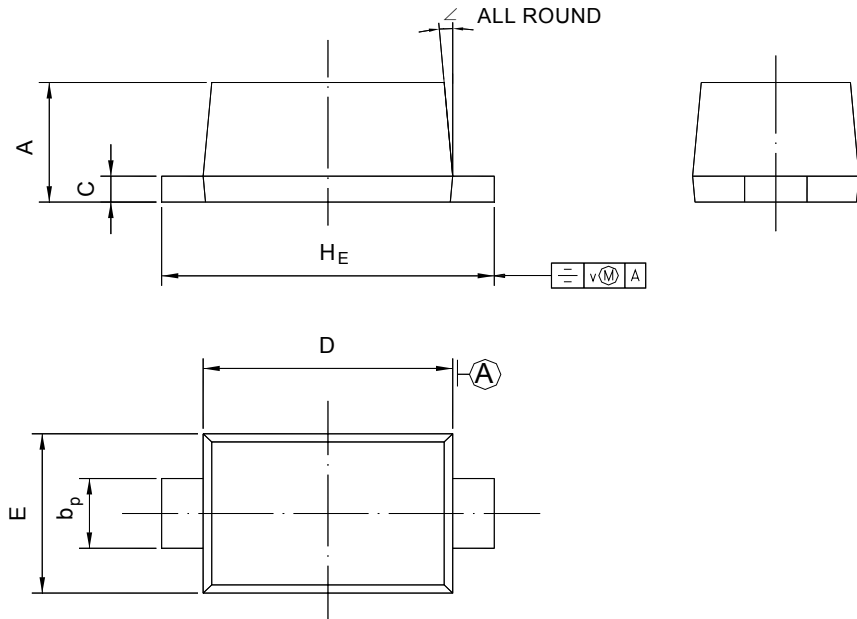


1SS510WT

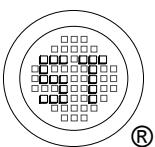
PACKAGE OUTLINE

Plastic surface mounted package; 2 leads

SOD-523



| UNIT | A | b _p | C | D | E | H _E | V | ∠ |
|------|--------------|----------------|----------------|--------------|--------------|----------------|-----|----|
| mm | 0.70 0.60 | 0.4 0.3 | 0.135 0.100 | 1.25 1.15 | 0.85 0.75 | 1.7 1.5 | 0.1 | 5° |



SEMTECH ELECTRONICS LTD.
Subsidiary of Sino-Tech International (BVI) Limited



Dated : 23/11/2006