

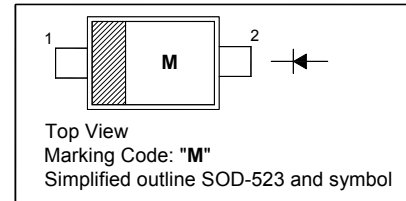
# 1SS314WT

## SILICON EPITAXIAL PLANAR DIODE

for VHF tuner band switch applications

### PINNING

PIN	DESCRIPTION
1	Cathode
2	Anode

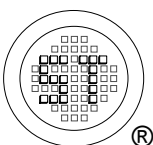


### Absolute Maximum Ratings ( $T_a = 25\text{ }^\circ\text{C}$ )

Parameter	Symbol	Value	Unit
Reverse Voltage	$V_R$	30	V
Forward Current	$I_F$	100	mA
Junction Temperature	$T_J$	125	$^\circ\text{C}$
Storage Temperature Range	$T_{stg}$	- 55 to + 125	$^\circ\text{C}$

### Characteristics at $T_a = 25\text{ }^\circ\text{C}$

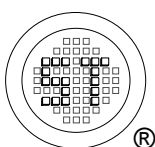
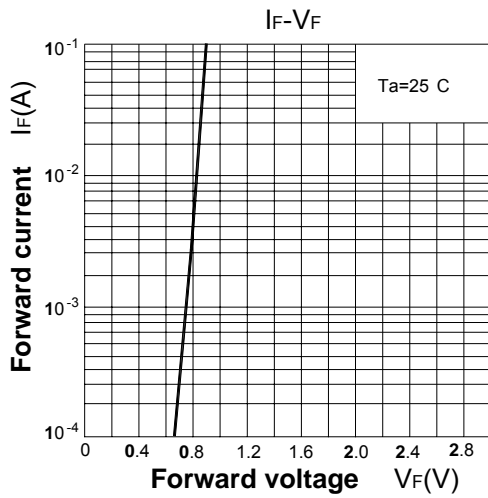
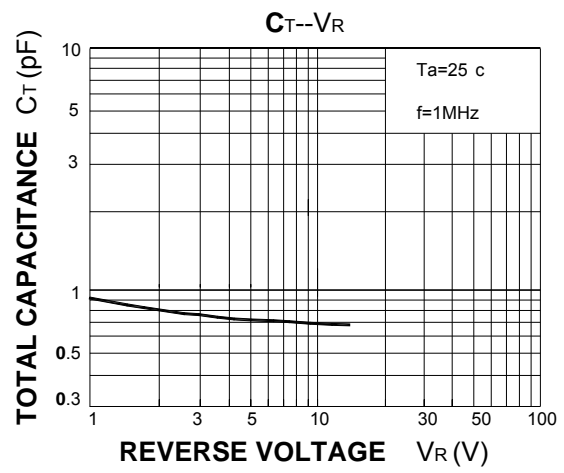
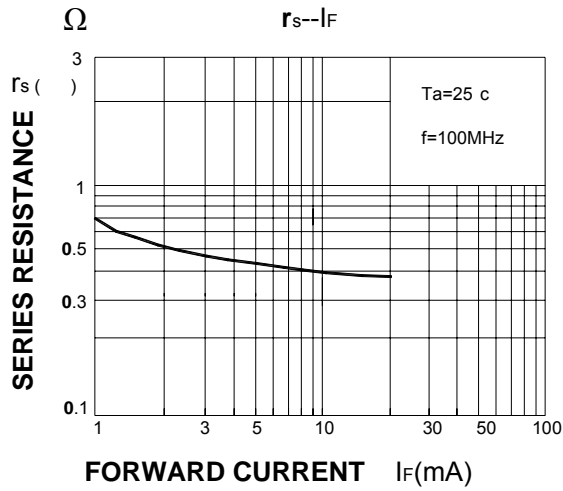
Parameter	Symbol	Min.	Max.	Unit
Forward Voltage at $I_F = 2\text{ mA}$	$V_F$	-	0.85	V
Reverse Current at $V_R = 15\text{ V}$	$I_R$	-	0.1	$\mu\text{A}$
Reverse Voltage at $I_R = 1\text{ }\mu\text{A}$	$V_R$	30	-	V
Total Capacitance at $V_R = 6\text{ V}$ , $f = 1\text{ MHz}$	$C_T$	-	1.2	pF
Series Resistance at $I_F = 2\text{ mA}$ , $f = 100\text{ MHz}$	$r_s$	-	0.9	$\Omega$



**SEMTECH ELECTRONICS LTD.**  
Subsidiary of Sino-Tech International (BVI) Limited



Dated : 23/11/2006



**SEMTECH ELECTRONICS LTD.**  
Subsidiary of Sino-Tech International (BVI) Limited

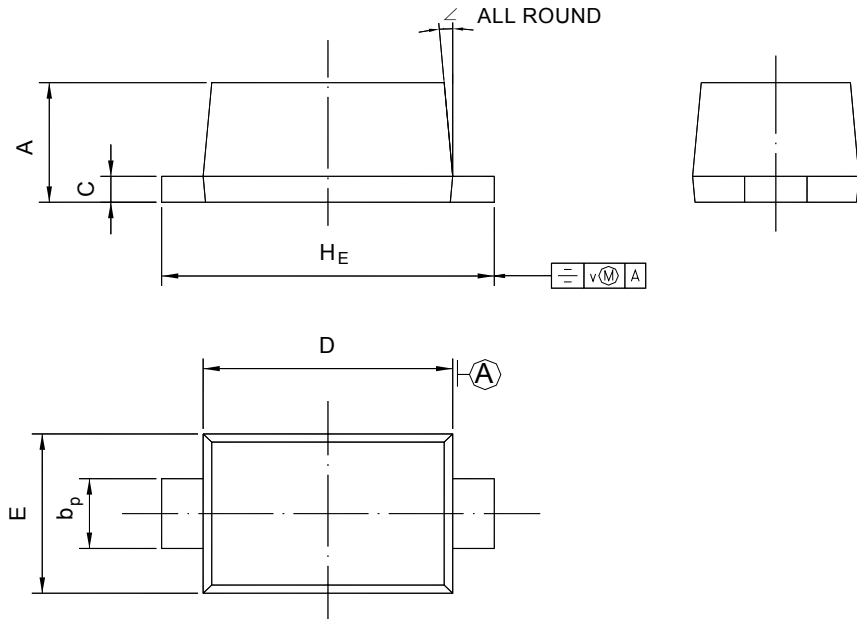


# 1SS314WT

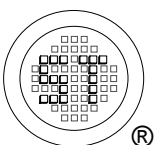
## PACKAGE OUTLINE

Plastic surface mounted package; 2 leads

SOD-523



UNIT	A	$b_p$	C	D	E	$H_E$	V	$\angle$
mm	0.70 0.60	0.4 0.3	0.135 0.100	1.25 1.15	0.85 0.75	1.7 1.5	0.1	$5^\circ$



**SEMTECH ELECTRONICS LTD.**  
Subsidiary of Sino-Tech International (BVI) Limited



Dated : 23/11/2006