

MA721WS

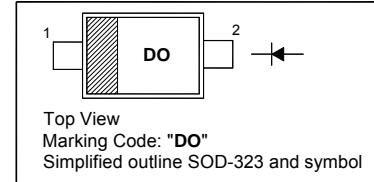
SILICON EPITAXIAL SCHOTTKY BARRIER DIODE

Applications

- Super-high speed switching circuit
- Small current rectification

PINNING

| PIN | DESCRIPTION |
|-----|-------------|
| 1 | Cathode |
| 2 | Anode |



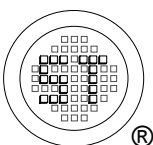
Absolute Maximum Ratings ($T_a = 25\text{ }^\circ\text{C}$)

| Parameter | Symbol | Value | Unit |
|---------------------------------------------------------|-------------|---------------|------------------|
| Reverse Voltage | V_R | 30 | V |
| Peak Forward Current | I_{FM} | 300 | mA |
| Average Forward Current | $I_{F(AV)}$ | 200 | mA |
| Non-repetitive Peak Forward Surge Current ¹⁾ | I_{FSM} | 1 | A |
| Junction Temperature | T_J | 150 | $^\circ\text{C}$ |
| Storage Temperature Range | T_{stg} | - 55 to + 150 | $^\circ\text{C}$ |

¹⁾ The peak-to-peak value in one cycle of 50 Hz sine-wave (non-repetitive)

Characteristics at $T_a = 25\text{ }^\circ\text{C}$

| Parameter | Symbol | Typ. | Max. | Unit |
|---------------------------------------------------------------------------------------------------------|----------|------|------|---------------|
| Forward Voltage at $I_F = 200\text{ mA}$ | V_F | - | 0.55 | V |
| Reverse Current at $V_R = 30\text{ V}$ | I_R | - | 50 | μA |
| Terminal Capacitance at $f = 1\text{ MHz}$ | C_T | 30 | - | pF |
| Reverse Recovery Time at $I_F = I_R = 100\text{ mA}$, $I_{rr} = 10\text{ mA}$, $R_L = 100\ \Omega$ | t_{rr} | 3 | - | ns |

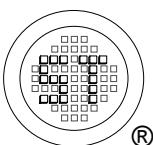
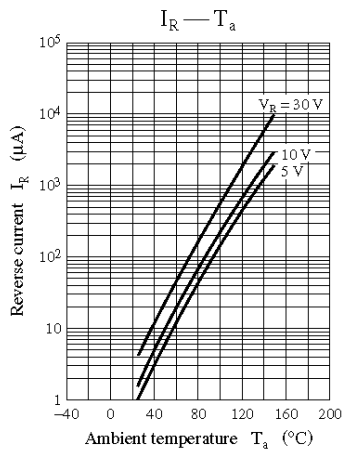
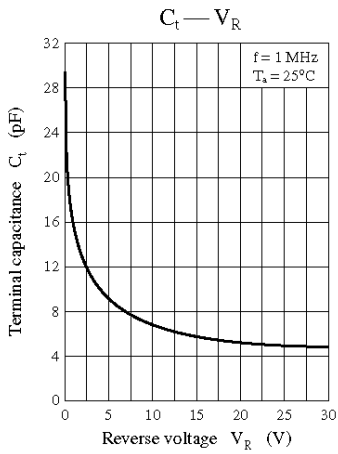
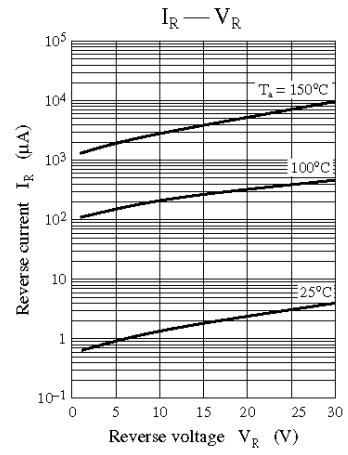
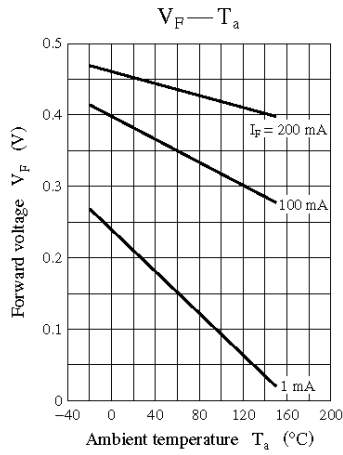
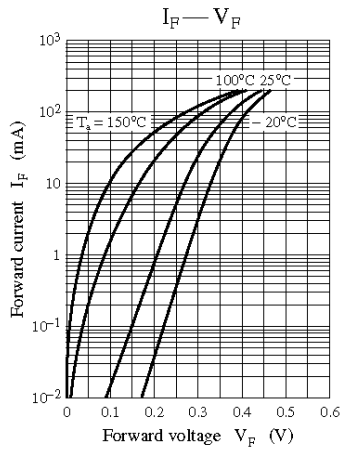


SEMTECH ELECTRONICS LTD.
Subsidiary of Sino-Tech International (BVI) Limited



Dated : 01/09/2006

MA721WS



SEMTECH ELECTRONICS LTD.
 Subsidiary of Sino-Tech International (BVI) Limited



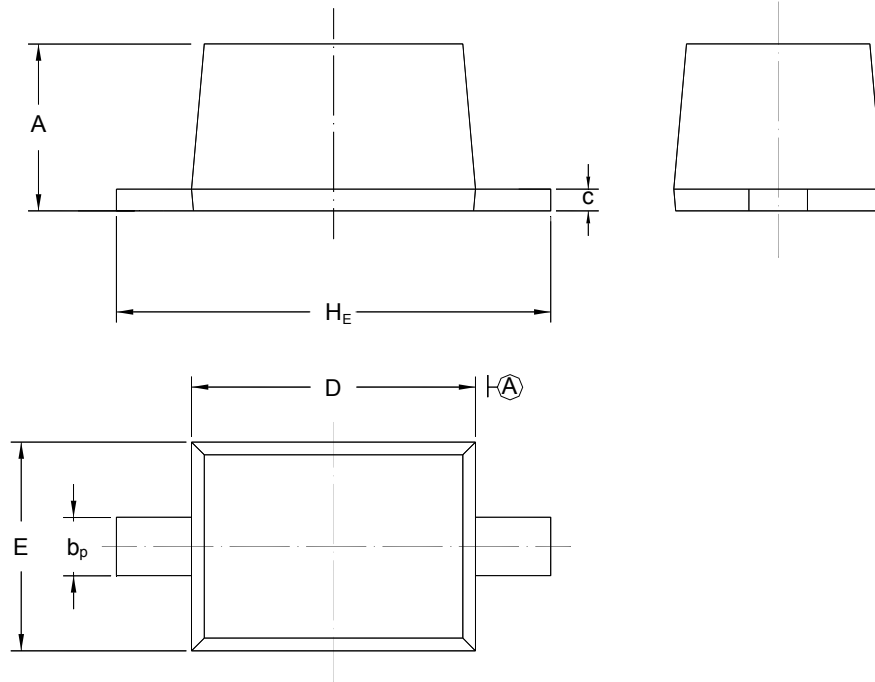
Dated : 01/09/2006

MA721WS

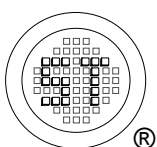
PACKAGE OUTLINE

Plastic surface mounted package; 2 leads

SOD-323



| UNIT | A | b_p | C | D | E | H_E |
|------|--------------|--------------|--------------|--------------|--------------|--------------|
| mm | 1.10 0.80 | 0.40 0.25 | 0.15 0.10 | 1.80 1.60 | 1.35 1.15 | 2.80 2.30 |



SEMTECH ELECTRONICS LTD.
Subsidiary of Sino-Tech International (BVI) Limited



Dated : 01/09/2006