

SD784WS

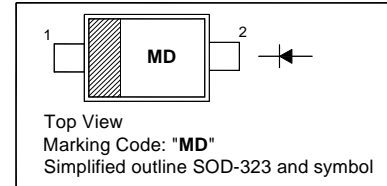
SILICON SCHOTTKY BARRIER DIODE

Applications

- Low voltage high speed switching

PINNING

PIN	DESCRIPTION
1	Cathode
2	Anode



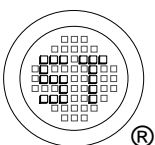
Absolute Maximum Ratings ($T_a = 25\text{ }^\circ\text{C}$)

Parameter	Symbol	Value	Unit
Peak Reverse Voltage	V_{RM}	30	V
Reverse Voltage	V_R	30	V
Average Forward Current	I_O	100	mA
Peak Forward Current	I_{FM}	300	mA
Peak Forward Surge Current	I_{FSM}	1	A
Power Dissipation	P_D	200 ¹⁾	mW
Junction Temperature Range	T_j	125	$^\circ\text{C}$
Storage Temperature Range	T_{stg}	- 55 to + 125	$^\circ\text{C}$

¹⁾ Mounted on a glass epoxy circuit of board of 20 X 20 mm, pad dimension of 4 X 4 mm.

Characteristics at $T_a = 25\text{ }^\circ\text{C}$

Parameter	Symbol	Typ.	Max.	Unit
Forward Voltage at $I_F = 1\text{ mA}$ at $I_F = 5\text{ mA}$ at $I_F = 100\text{ mA}$	V_F	- - -	0.35 0.4 0.55	V
Reverse Current at $V_R = 30\text{ V}$	I_R	-	15	μA
Total Capacitance at $V_R = 1\text{ V}$, $f = 1\text{ MHz}$	C_T	40	-	pF

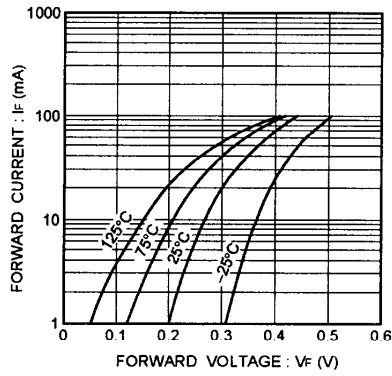


SEMTECH ELECTRONICS LTD.
Subsidiary of Sino-Tech International (BVI) Limited

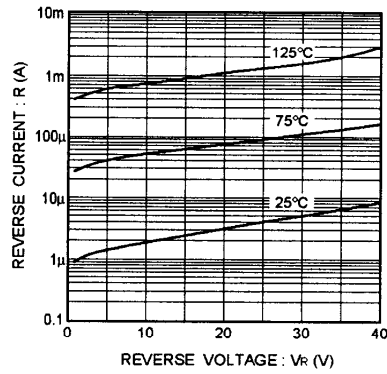


Dated : 01/09/2006

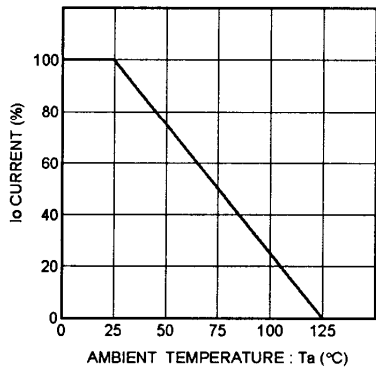
SD784WS



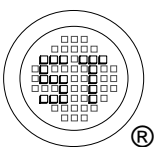
Forward characteristics



Reverse characteristics



Derating curve
(mounting on glass epoxy PCBs)



SEMTECH ELECTRONICS LTD.
Subsidiary of Sino-Tech International (BVI) Limited



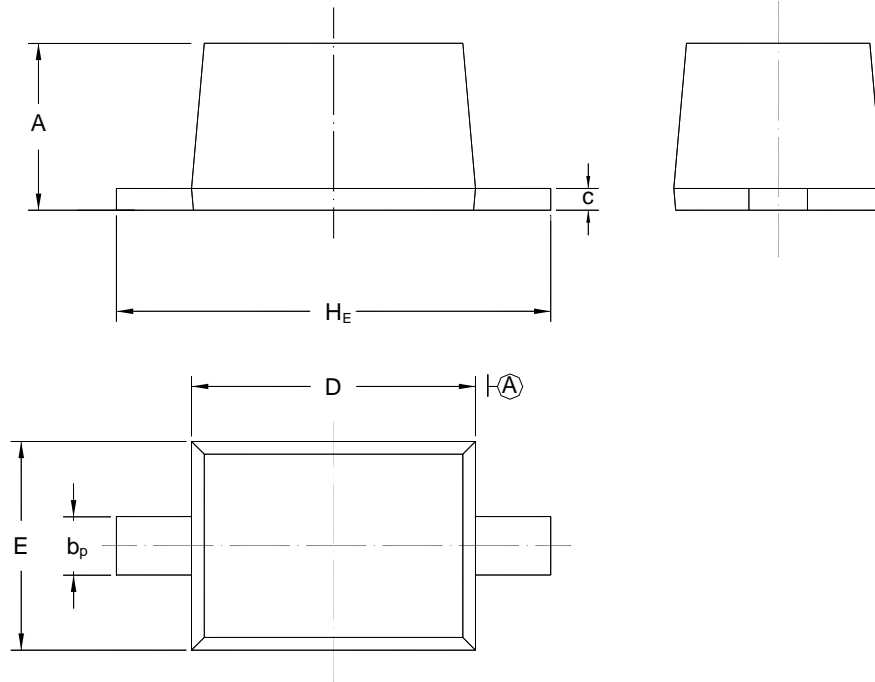
Dated : 01/09/2006

SD784WS

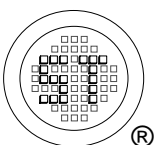
PACKAGE OUTLINE

Plastic surface mounted package; 2 leads

SOD-323



UNIT	A	b _p	C	D	E	H _E
mm	1.10 0.80	0.40 0.25	0.15 0.10	1.80 1.60	1.35 1.15	2.80 2.30



SEMTECH ELECTRONICS LTD.
Subsidiary of Sino-Tech International (BVI) Limited



Dated : 01/09/2006