

BAT17WS

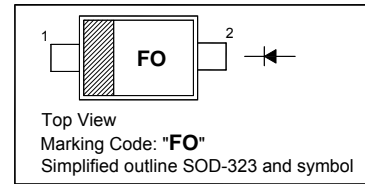
SMALL SIGNAL SCHOTTKY DIODE

Features

- Low turn-on voltage low capacitance
- Ultrafast switching
- Ideal for single or double, UHF balanced mixer, modulators and phase detectors

PINNING

PIN	DESCRIPTION
1	Cathode
2	Anode



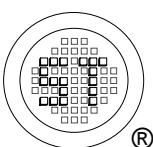
Absolute Maximum Ratings ($T_a = 25\text{ }^\circ\text{C}$)

Parameter	Symbol	Value	Unit
Reverse Voltage	V_R	4	V
Forward Current	I_F	30	mA
Power Dissipation	P_{tot}	150	mW
Thermal resistance junction to ambient air ¹⁾	$R_{\theta JA}$	500	$^\circ\text{C/W}$
Junction Temperature	T_J	125	$^\circ\text{C}$
Storage Temperature	T_{stg}	- 65 to + 150	$^\circ\text{C}$

¹⁾ Valid provided that electrodes are kept at ambient temperature.

Characteristics $T_a = 25\text{ }^\circ\text{C}$

Parameter	Symbol	Min.	Max.	Unit
Reverse Breakdown Voltage at $I_R = 10\text{ }\mu\text{A}$	$V_{(BR)R}$	4	-	V
Maximum Forward Voltage at $I_F = 10\text{ mA}$	V_F	-	600	mV
Reverse Leakage Current at $V_R = 3\text{ V}$ at $V_R = 3\text{ V}$, $T_a = 60\text{ }^\circ\text{C}$	I_R	- -	0.25 1.25	μA
Diode Capacitance at $V_R = 0\text{ V}$, $f = 1\text{ MHz}$	C_D	-	1	pF

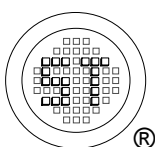
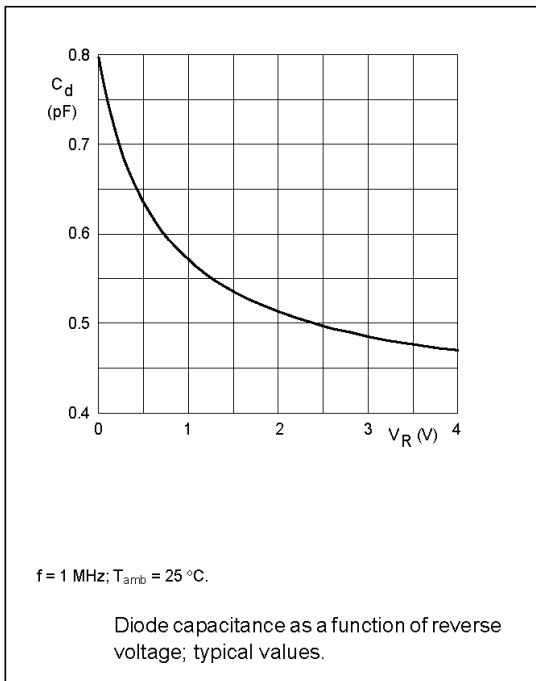
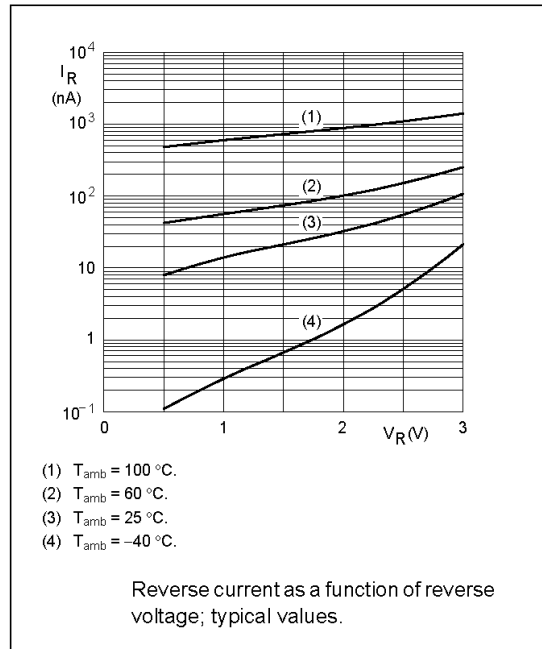
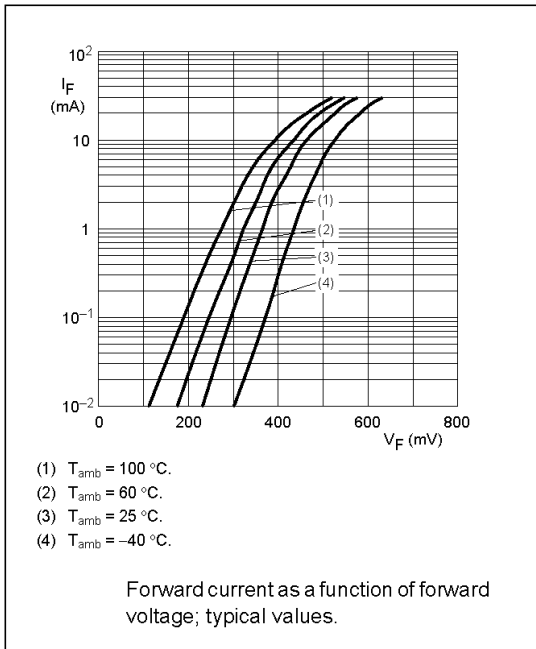


SEMTECH ELECTRONICS LTD.
Subsidiary of Sino-Tech International (BVI) Limited



Dated : 01/09/2006

BAT17WS



SEMTECH ELECTRONICS LTD.
 Subsidiary of Sino-Tech International (BVI) Limited



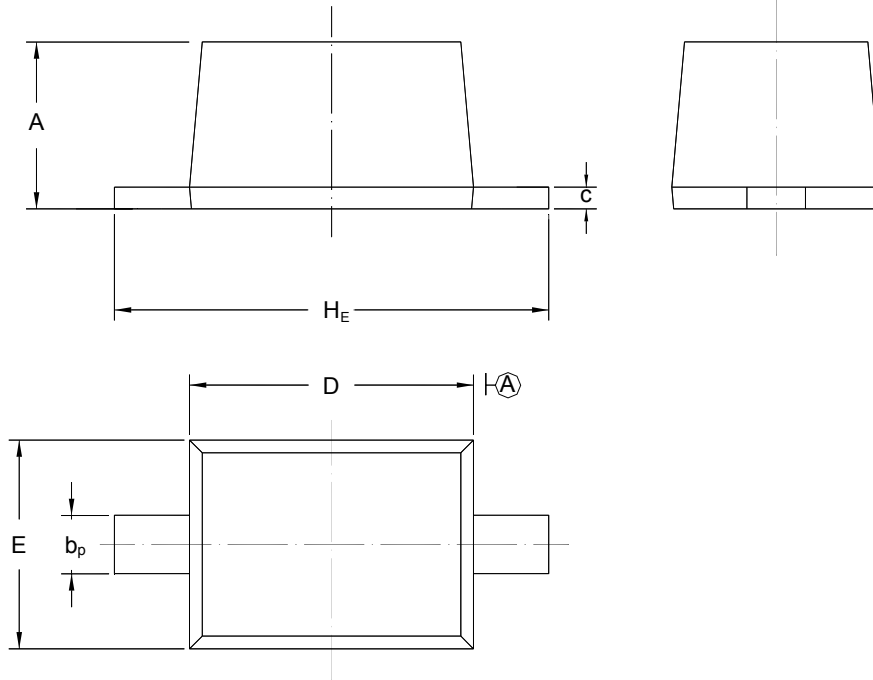
Dated : 01/09/2006

BAT17WS

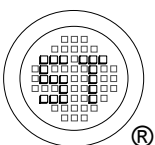
PACKAGE OUTLINE

Plastic surface mounted package; 2 leads

SOD-323



UNIT	A	b _p	C	D	E	H _E
mm	1.10 0.80	0.40 0.25	0.15 0.10	1.80 1.60	1.35 1.15	2.80 2.30



SEMTECH ELECTRONICS LTD.
Subsidiary of Sino-Tech International (BVI) Limited



Dated : 01/09/2006