

# 1SS356WS

## BAND SWITCHING DIODE

### Features

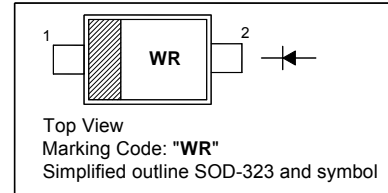
- Small surface mounted type
- High reliability

### Applications

- High frequency switching

### PINNING

PIN	DESCRIPTION
1	Cathode
2	Anode

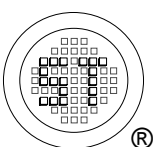


### Absolute Maximum Ratings ( $T_a = 25\text{ }^\circ\text{C}$ )

Parameter	Symbol	Value	Unit
Reverse Voltage	$V_R$	35	V
Forward Current	$I_O$	100	mA
Junction Temperature	$T_J$	125	$^\circ\text{C}$
Storage Temperature Range	$T_{stg}$	- 55 to + 125	$^\circ\text{C}$

### Electrical Characteristics at $T_a = 25\text{ }^\circ\text{C}$

Parameter	Symbol	Max.	Unit
Forward Voltage at $I_F = 10\text{ mA}$	$V_F$	1	V
Reverse Current at $V_R = 25\text{ V}$	$I_R$	10	nA
Capacitance between Terminals at $V_R = 6\text{ V}$ , $f = 1\text{ MHz}$	$C_T$	1.2	pF
Forward Operating Resistance at $I_F = 2\text{ mA}$ , $f = 100\text{ MHz}$	$r_F$	0.9	$\Omega$



**SEMTECH ELECTRONICS LTD.**  
Subsidiary of Sino-Tech International (BVI) Limited



Dated : 01/09/2006

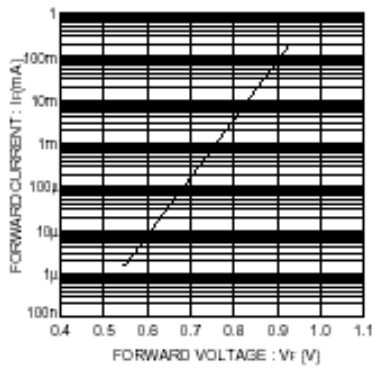


Fig. 1 Forward characteristics

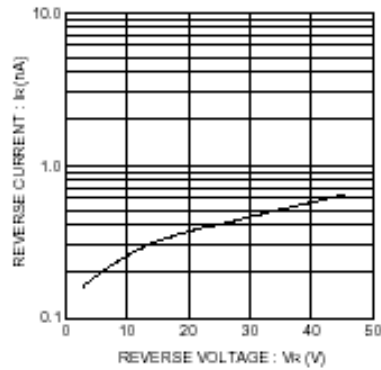


Fig. 2 Reverse characteristics

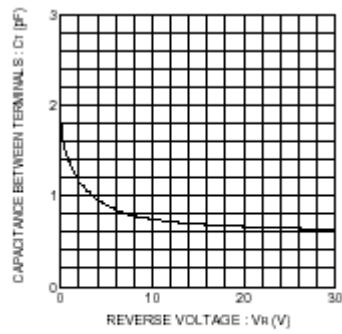


Fig. 3 Capacitance between terminals characteristics

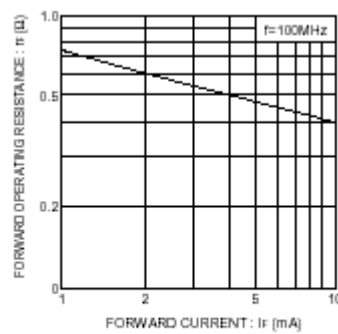
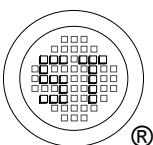


Fig. 4 Forward operating resistance characteristics

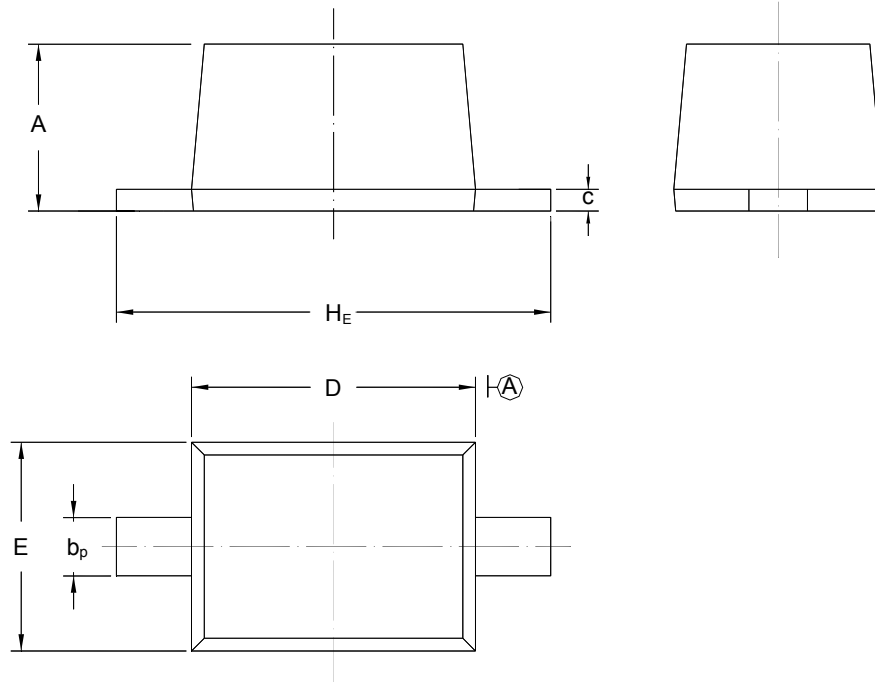


# 1SS356WS

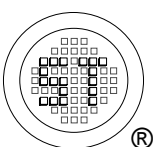
## PACKAGE OUTLINE

Plastic surface mounted package; 2 leads

SOD-323



UNIT	A	b <sub>p</sub>	C	D	E	H <sub>E</sub>
mm	1.10 0.80	0.40 0.25	0.15 0.10	1.80 1.60	1.35 1.15	2.80 2.30



**SEMTECH ELECTRONICS LTD.**  
Subsidiary of Sino-Tech International (BVI) Limited



Dated : 01/09/2006