

# 1SS77WS

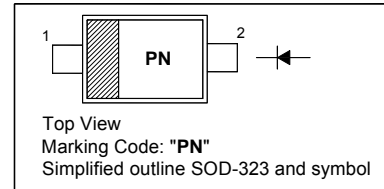
## SILICON EPITAXIAL PLANAR DIODE

### BAND SWITCHING DIODE

For band switching application

#### PINNING

| PIN | DESCRIPTION |
|-----|-------------|
| 1   | Cathode     |
| 2   | Anode       |



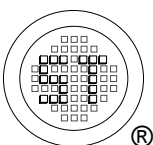
### Absolute Maximum Ratings ( $T_a = 25\text{ }^\circ\text{C}$ )

| Parameter                                   | Symbol    | Value         | Unit             |
|---|-----------|---------------|------------------|
| Reverse Voltage                             | $V_R$     | 35            | V                |
| Forward Current                             | $I_F$     | 100           | mA               |
| Operating Ambient Temperature <sup>1)</sup> | $T_{opr}$ | - 25 to + 85  | $^\circ\text{C}$ |
| Storage Temperature Range                   | $T_{stg}$ | - 55 to + 150 | $^\circ\text{C}$ |

<sup>1)</sup> Maximum ambient temperature during operation

### Characteristics at $T_a = 25\text{ }^\circ\text{C}$

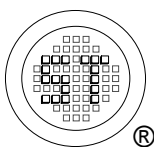
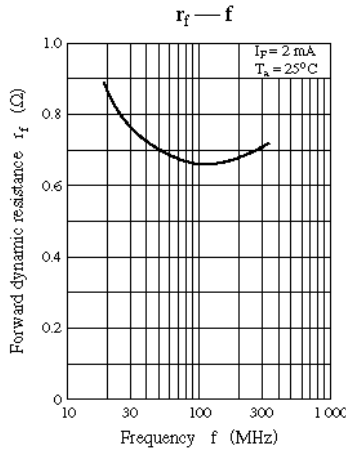
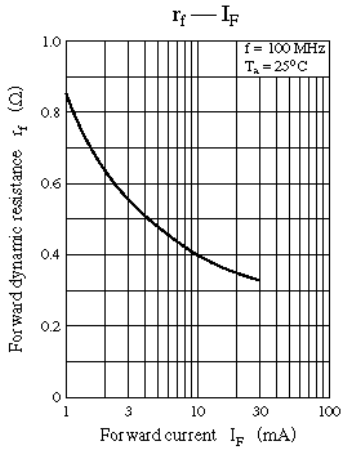
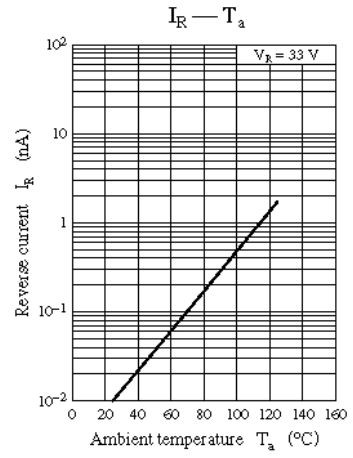
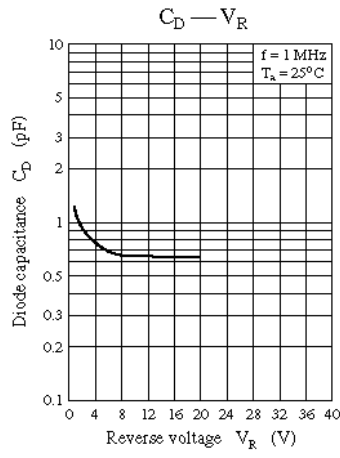
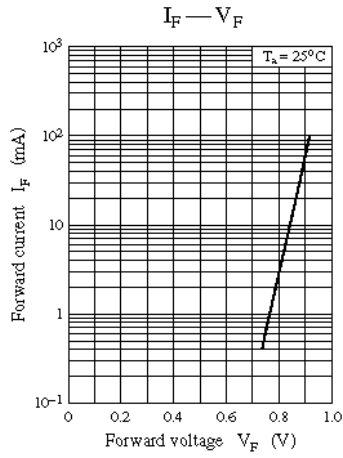
| Parameter   | Symbol | Max. | Unit          |
|---|--------|------|---------------|
| Forward Voltage<br>at $I_F = 100\text{ mA}$                                 | $V_F$  | 1    | V             |
| Reverse Current<br>at $V_R = 33\text{ V}$                                   | $I_R$  | 0.1  | $\mu\text{A}$ |
| Diode Capacitance<br>at $V_R = 6\text{ V}$ , $f = 1\text{ MHz}$             | $C_D$  | 1.2  | pF            |
| Forward Dynamic Resistance<br>at $I_F = 2\text{ mA}$ , $f = 100\text{ MHz}$ | $r_f$  | 0.85 | $\Omega$      |



**SEMTECH ELECTRONICS LTD.**  
Subsidiary of Sino-Tech International (BVI) Limited



Dated : 01/09/2006



**SEMTECH ELECTRONICS LTD.**  
Subsidiary of Sino-Tech International (BVI) Limited

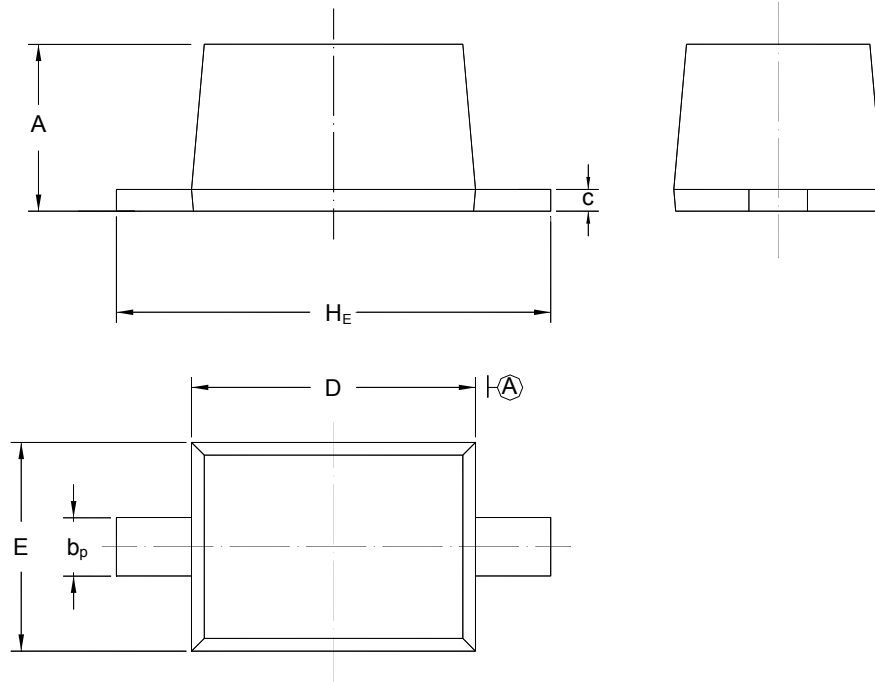


# 1SS77WS

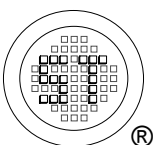
## PACKAGE OUTLINE

Plastic surface mounted package; 2 leads

SOD-323



| UNIT | A            | $b_p$        | C            | D            | E            | $H_E$        |
|------|--------------|--------------|--------------|--------------|--------------|--------------|
| mm   | 1.10<br>0.80 | 0.40<br>0.25 | 0.15<br>0.10 | 1.80<br>1.60 | 1.35<br>1.15 | 2.80<br>2.30 |



**SEMTECH ELECTRONICS LTD.**  
Subsidiary of Sino-Tech International (BVI) Limited



Dated : 01/09/2006