

SMFB13W

Surface Mount Schottky Barrier Diode

Switching Type Power Supply Applications

Features

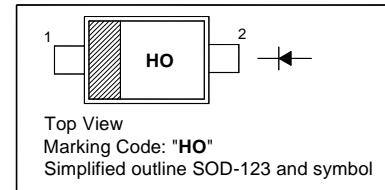
- For Use in Low Voltage, High Frequency inverters, Free Wheeling, and Polarity Protection Applications

Application

- Switching Power Supply
- Reversed Battery Connection Protection
- DC/DC Converter
- Cellular Phones

PINNING

PIN	DESCRIPTION
1	Cathode
2	Anode

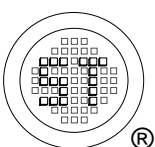


Absolute Maximum Ratings ($T_a = 25\text{ }^\circ\text{C}$)

Parameter	Symbol	Value	Unit
Peak Repetitive Reverse Voltage	V_{RRM}	30	V
Average Rectified Output Current	$I_{F(AV)}$	1.0	A
Peak One Cycle Surge Forward Current (Non-Repetitive 60 Hz)	I_{FSM}	22	A
Operating Temperature Range	T_j	- 40 to + 125	$^\circ\text{C}$
Storage Temperature Range	T_{stg}	- 40 to + 125	$^\circ\text{C}$

Characteristics at $T_a = 25\text{ }^\circ\text{C}$

Parameter	Symbol	Max.	Unit
Peak Forward Voltage at $I_{FM} = 1\text{ A}$	V_{FM}	0.42	V
Repetitive Peak Reverse Current at $V_{RRM} = 30\text{ V}$	I_{RRM}	1	mA

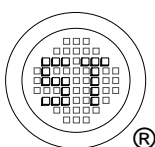
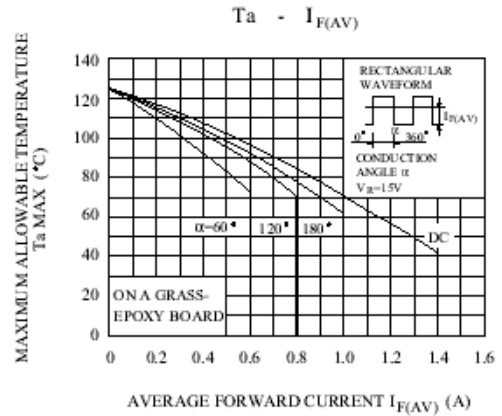
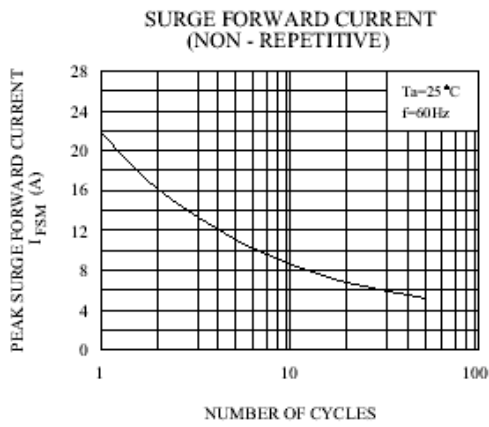
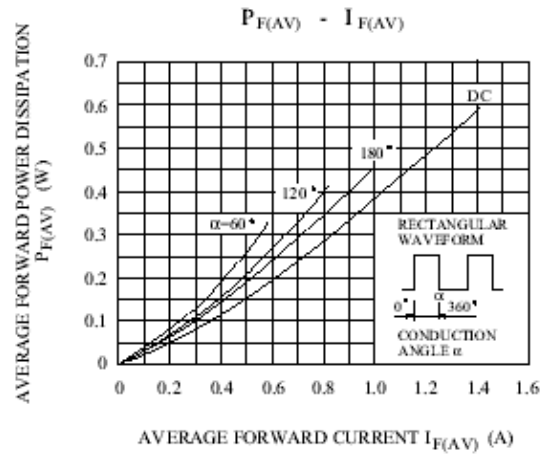
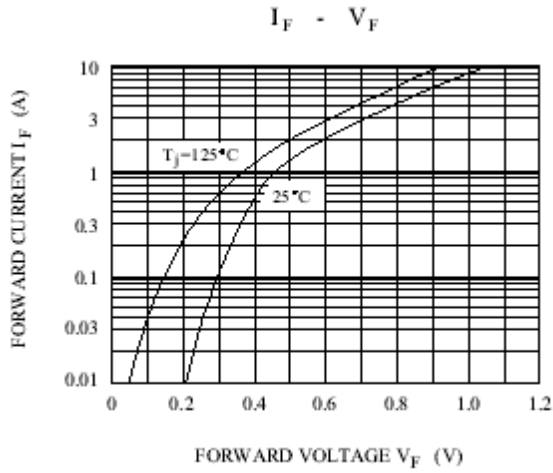


SEMTECH ELECTRONICS LTD.
Subsidiary of Sino-Tech International (BVI) Limited



Dated :27/09/2010 Rev:01

SMFB13W



SEMTECH ELECTRONICS LTD.
Subsidiary of Sino-Tech International (BVI) Limited

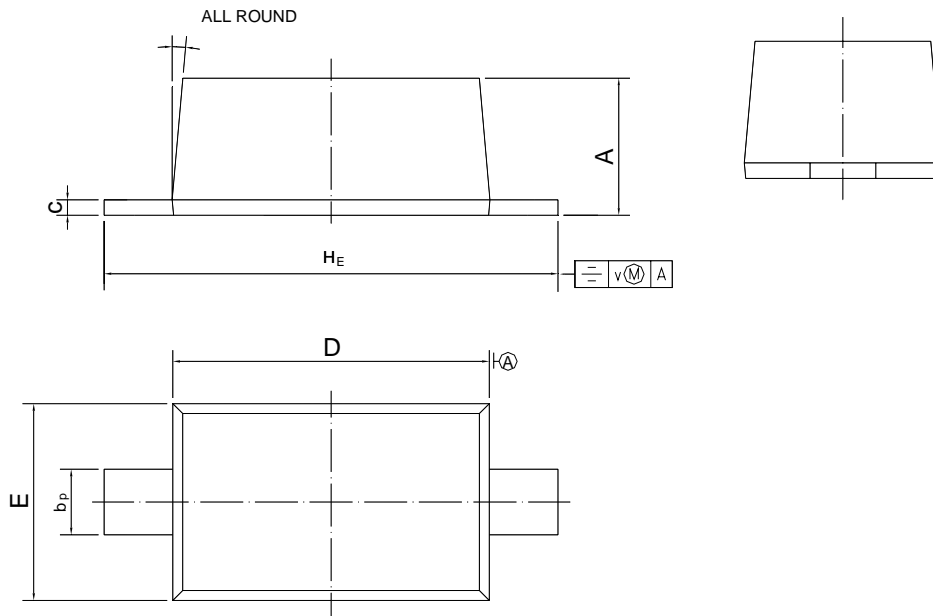


SMFB13W

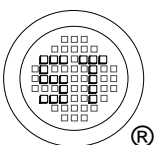
PACKAGE OUTLINE

Plastic surface mounted package; 2 leads

SOD-123



UNIT	A	b _p	c	D	E	H _E	v	
mm	1.15 1.05	0.6 0.5	0.135 0.100	2.7 2.6	1.65 1.55	3.85 3.55	0.2	5°



SEMTECH ELECTRONICS LTD.
Subsidiary of Sino-Tech International (BVI) Limited



Dated :27/09/2010 Rev:01